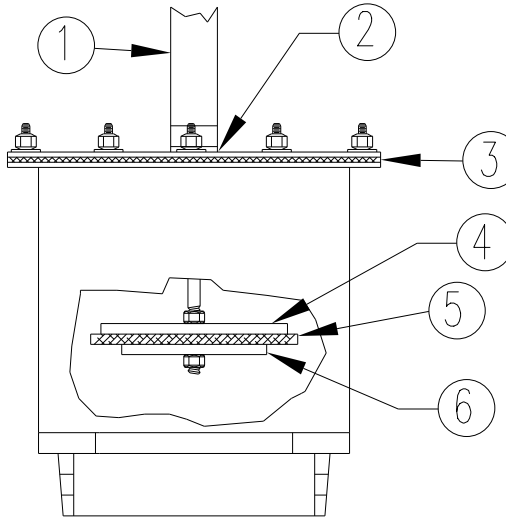


ILLUSTRATIONS AND PARTS LISTS

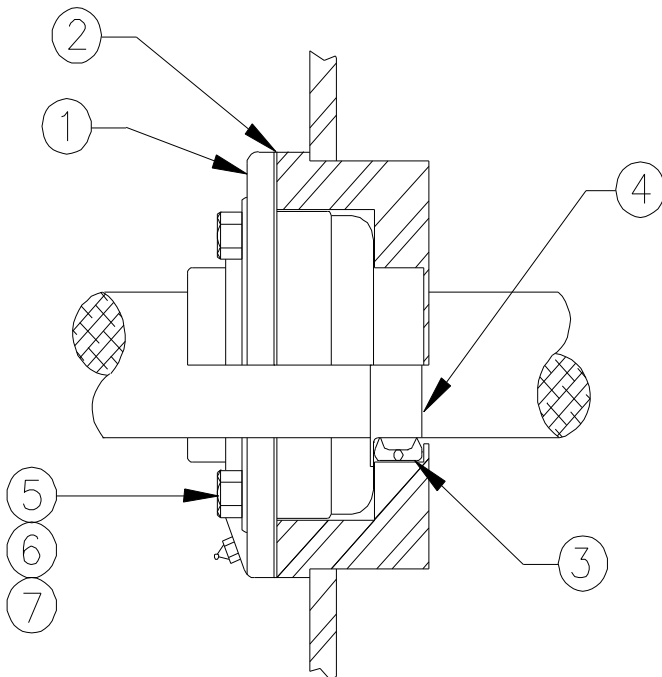
Figure 8-1
Drain Assembly



FOR ALL MODELS

<u>Item</u>	<u>Part No.</u>	<u>Description</u>	<u>Qty</u>
1	1130	Air Cylinder	1
2	1134	Air Cylinder Seal	1
3	610-1117-1	Drain Cover Gasket	1
4	610-1133	Top Plate	1
5	610-1132	Gasket Seal	1
6	610-1131	Bottom Plate	1

Figure 8-2
Bearing Assembly (2 Assemblies)



FOR 60 LB. MODELS (DW600PNSWE)

<u>Item</u>	<u>Part No.</u>	<u>Description</u>	<u>Qty</u>
1	6P-1501	Bearing 2"	2
2	6P-1509	Bearing Gasket	2
3	6P-1515-1	Bearing Shaft Seal	4
4	S6P-1515-2	Speedi Sleeve	2
5	9756	Hex Head Bolt	8
6	1502	Bearing Key	2
7	9724	Flat Head Screw	2

FOR 100 LB. MODELS (DW1000CNSWE)

<u>Item</u>	<u>Part No.</u>	<u>Description</u>	<u>Qty</u>
1	10C-1501	Bearing 2 1/2"	2
2	10C-1509	Bearing Gasket	2
3	10C-1515-1	Bearing Shaft Seal	4
4	S10C-1515-2	Speedi Sleeve	2
5	9756	Hex Head Bolt	8
6	1502	Bearing Key	2
7	9724	Flat Head Screw	2